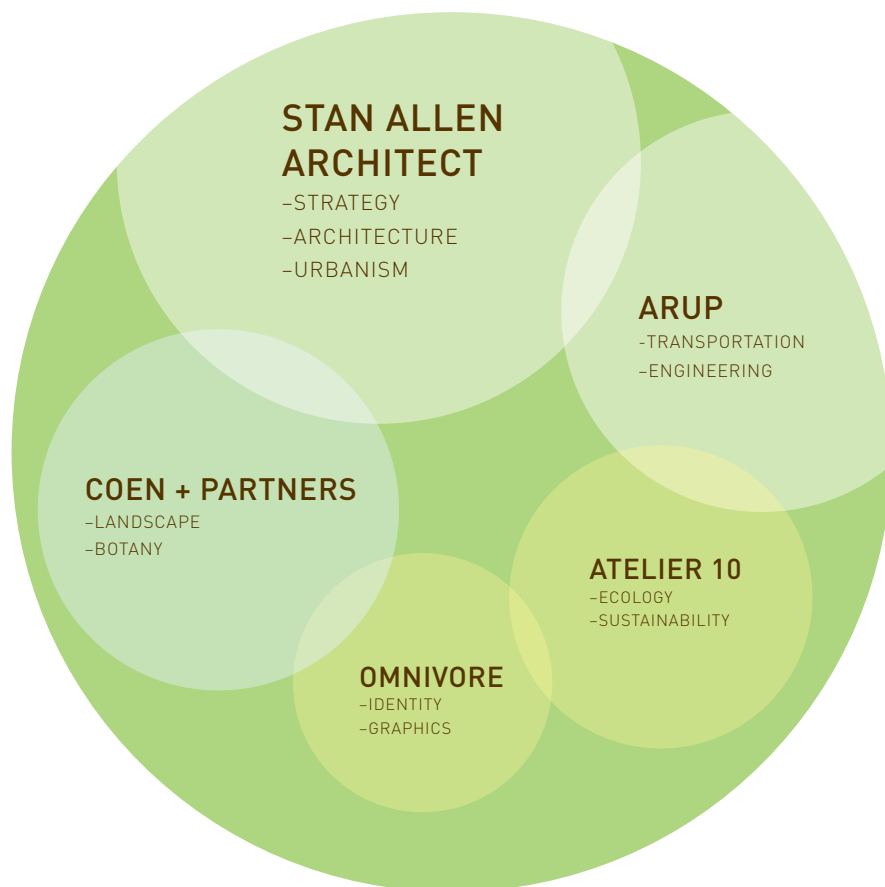


CAPABILITY & PROCESS



CCV CHAPEL, CAVITE, PHILIPPINES: SAA/Stan Allen Architect

The new building for the Faculty of Architecture, Building and Planning requires creative design leadership and a team capable of responding to the changing landscape of the contemporary city. We have assembled an experienced team offering creative solutions across a wide range of expertise.

WORKING STRATEGIES:

- **CURATE EXPERTISE**

Assemble a team of highly qualified experts from a range of related disciplines. This includes the core team of architects and landscape architects, with sustainability as part of the core expertise offered by our team

- **EMBRACE CHANGE**

Structure a design methodology capable of adapting to the complexity of a new institution embedded in a dynamic urban context

- **FOSTER DIVERSITY**

Activate the site and the building with a multiplicity of social, natural and architectural ecologies

- **CULTIVATE A NEW EDUCATIONAL INFRASTRUCTURE**

Expand the opportunities for learning, and engaging both the city and the landscape through a synthetic architectural strategies

SAA/Stan Allen Architect, Coen + Partners, Arup and Atelier 10 have a long track record of innovative work in architecture, urban design and landscape. We will assume primary design leadership, and be responsible for coordinating the work of the team.

THE ACADEMIC ENVIRONMENT



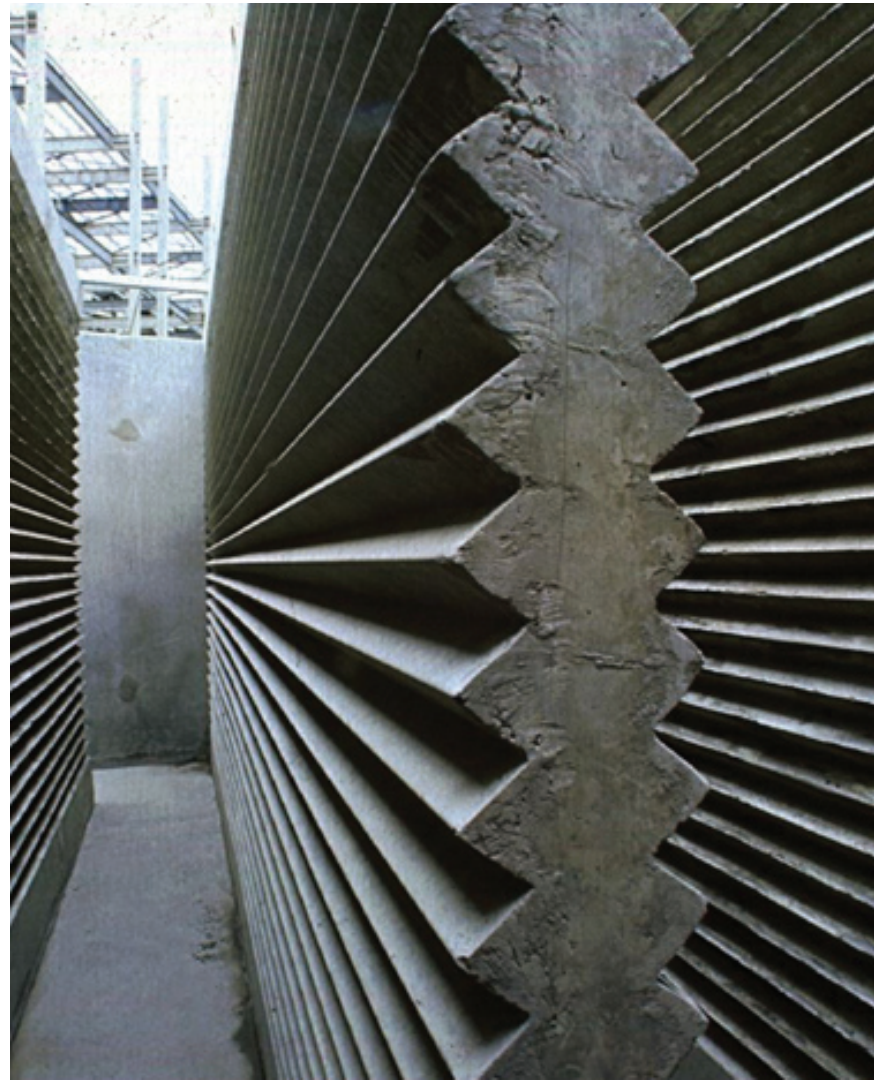
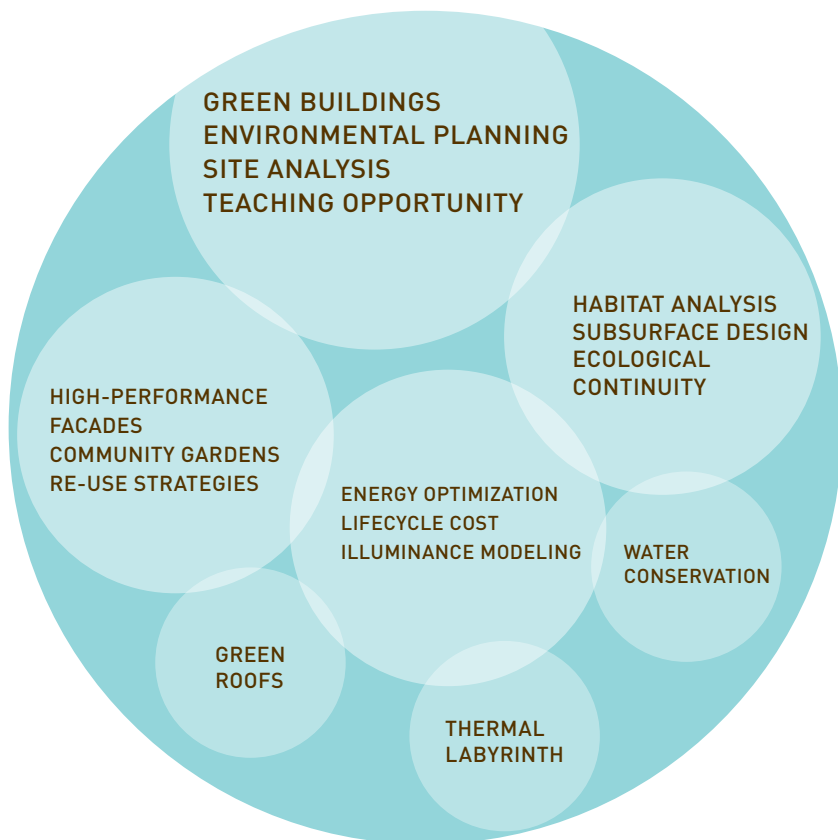
TULANE UNIVERSITY, NEW ORLEANS, LA: Coen + Partners

Our approach begins with a deep understanding of program, and a commitment to architectural education. The team is comprised of practitioners and prominent educators, uniquely qualified to imagine a new interdisciplinary teaching, research and learning environment. We are committed to dialogue with the full range of client groups – faculty, students and the administration. Critical analysis follows: with so much information available today, it is less access to information, than deciding which information counts. Creative solutions can then emerge from collaborative discussion steered by strong design vision. The programming challenges consist in:

- Creating an organizational and institutional framework where each discipline can establish its own identity, and develop creative work at a very high level, while at the same time encouraging interaction and the sharing of knowledge. Louis Kahn once said that buildings need bad spaces as well as good spaces – not everything happens in a purpose-built space.
- Establishing a strong presence for the Faculty on campus. The School's identity must in the first instance signal its commitment to design excellence, and the space resources must be on a level with the School's international ambitions.
- Cultivating affiliations beyond the Faculty: to other departments on campus, the surrounding landscape and the city beyond. Architectural education needs to embrace the world; we imagine the precinct of the school defined by a porous membrane, at once defining and protecting identity, but open to change and new information.

This team not only brings design leadership, but extensive academic administrative experience, and over 50 years of combined teaching experience in the fields of architecture and landscape.

THE LIVING BUILDING



THERMAL LABYRINTH, FEDERATION SQUARE. MELBOURNE, AUSTRALIA
: Atelier 10

Sustainable design is good design

Whether the goal is reduced energy consumption, extensive day-lighting without excessive internal heat gains, or water conservation, sustainable solutions are an integral aspect of basic design strategies – not a technological overlay or an afterthought.

Sustainable design is flexible and innovative:

An appropriate, innovative, and sustainable solution that addresses a wide range of problems is a hallmark of green design; every component or system must fulfill more than one need, and work efficiently as part of an overall systems approach.

Sustainable architecture performs better

Sustainable design is a salient and prominent aspect of significant architecture. Sustainability principles must be incorporated early in the design process to make buildings and landscapes more resource-efficient. Environmental design is a core service.

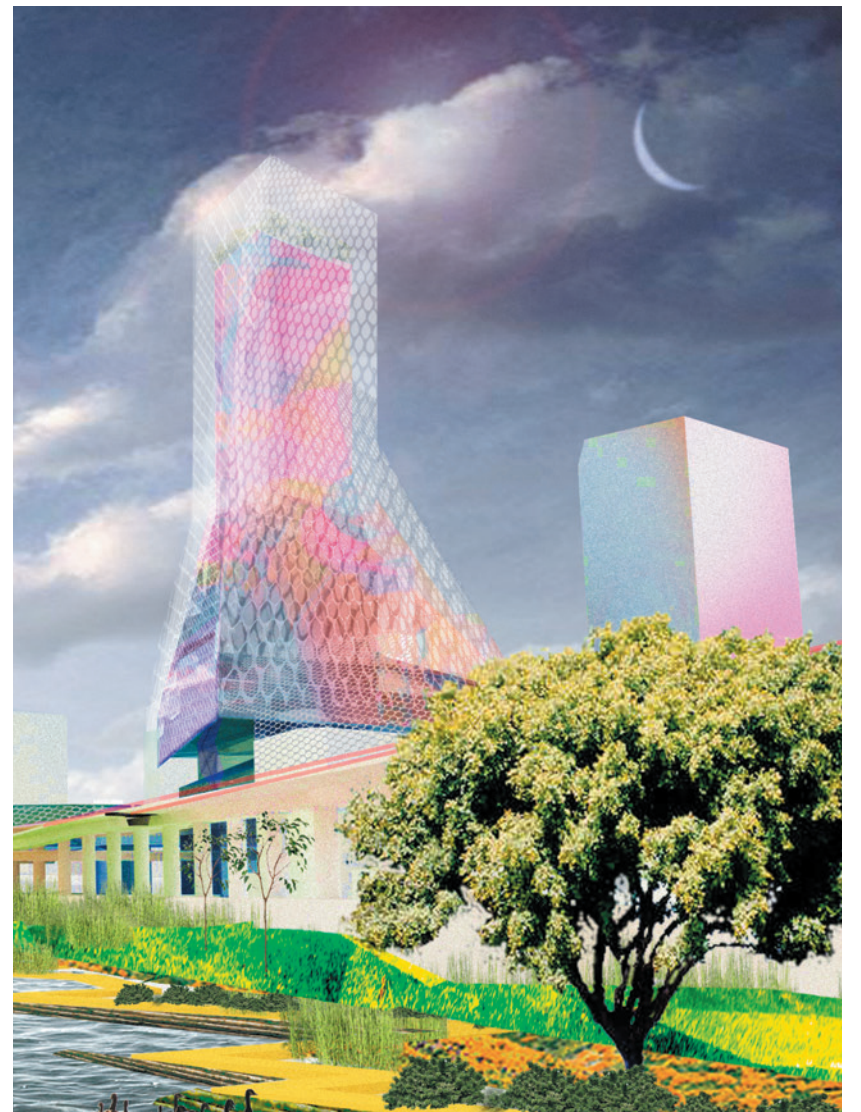
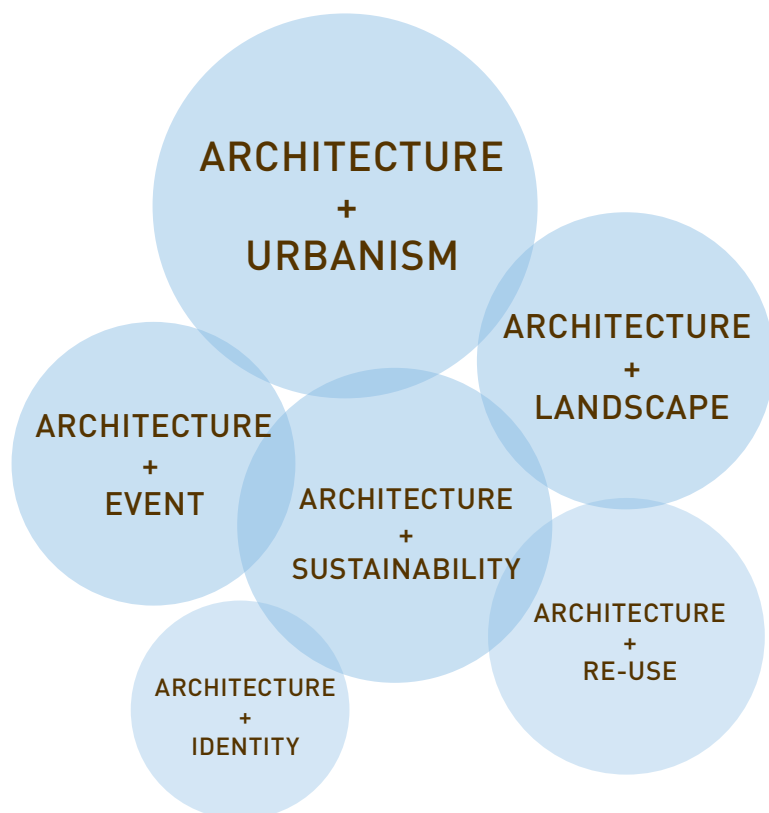
Performance matters on all scales

Sustainable concepts and high performance solutions can be incorporated at all levels of the project, from massing and siting decisions to detail design and material choice.

High performance benefits the environment

Sustainable design means innovative solutions to local environmental challenges. By mitigating heat island effects, improving watersheds, and promoting biodiversity, architectural and lighting design can improve the local quality of life.

BUILT PEDAGAGOGY



ECO-NET BUILDING & WATERFRONT PARK, TAIPEI, TAIWAN: SAA/
Stan Allen Architect

Architecture is by definition a synthetic discipline, integrating expertise from a number of related disciplines. We have identified six overlapping objectives, which follow from the programming challenges listed above. The site and program demand a bold approach to the problem that takes full advantage of the site's rich history. A successful design will re-imagine the site's constraints as opportunities. This suggests gardens in the air as well as on the ground; generous daylight studios connected to outdoor spaces; gardens that can function as amenities throughout the year; an active building envelope, and public spaces that work sectionally to create a complex that is at once an identifiable icon in the city and an active learning community.

Architecture + Urbanism recognizes that the Faculty is part of a dynamic, multi-cultural city, and that architectural education benefits from an engagement with the life of the city;

Architecture + Identity speaks to the need for the new structure to create an iconic presence on campus;

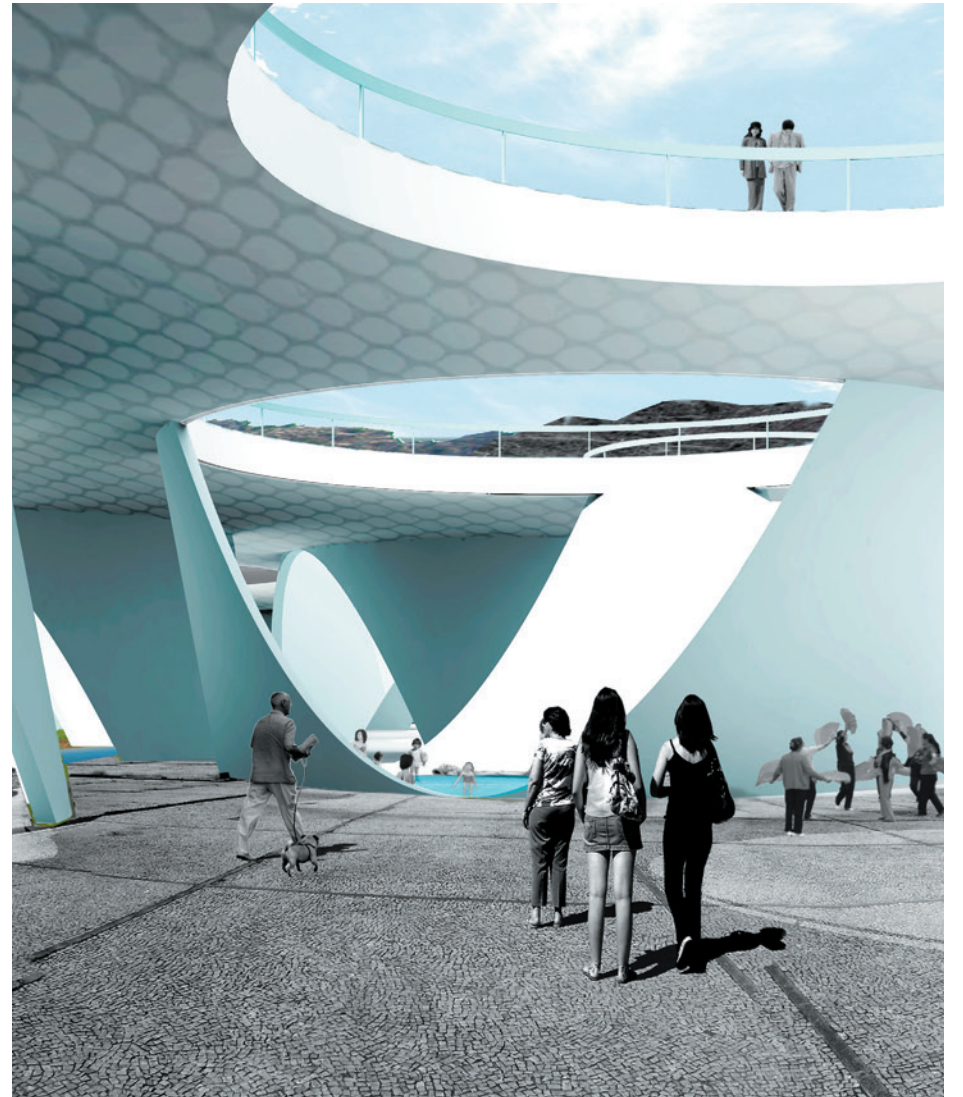
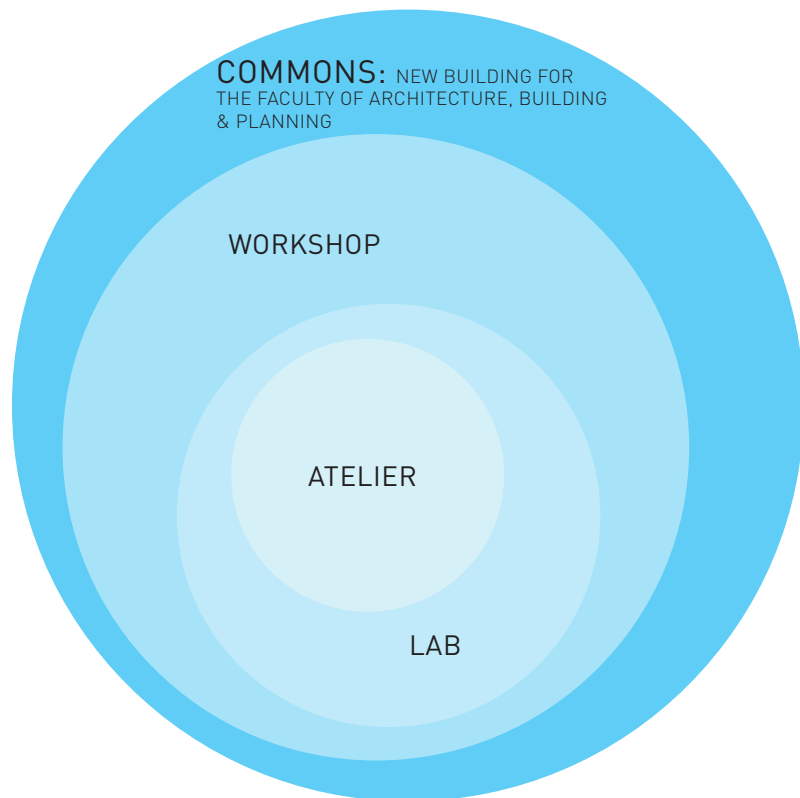
Architecture + Landscape situates the facilities and programs within the most progressive currents of ecological thinking;

Architecture + Sustainability signals our commitment to the use of energy-saving measures that are strategic and low tech as opposed to flashy and gadget-based;

Architecture + Re-generation implies a commitment to adaptive re-use as well as the recycling of material and energy wherever possible;

Architecture + Event affirms that learning is an active process that needs to take place within a dynamic social ecology.

THE DESIGN STUDIO



GWANGGYO FOAM BUILDING, SUWON, KOREA: SAA/Stan Allen Architect

SYNTHETIC

Architecture is a discipline at once technical, aesthetic, and social in scope. As such, it involves a broad range of intellectual and practical abilities. The primary attribute of architectural thinking is the ability to synthesize information from a number of different disciplines or areas of expertise. The design studio needs to be a place that actively encourages creativity, exploration, reflection and the exchange of ideas. Moreover, the technologies of design are always changing, and the studio needs to accommodate change. The open ended model of an artist loft – which combines aspects of laboratory, atelier and workshop – remains relevant today. The design studio is a place where students learn by doing; the studio atmosphere promotes creativity and celebrates the values of innovation and discovery.

EXPERIMENTAL

The studio is the place where students research, propose, test, develop, and present design propositions that synthesize material from a diverse range of sources. As such, the studio needs to connect to the world outside: to other fields of inquiry, to the city and beyond. Studio work begins with the clear definition of a question, proceeds through research to the identification of relevant material, and ends with the empirical testing and development of proposals. It is a place of collaboration, intellectual exchange, and experimentation for students and faculty alike.

COLLECTIVE

Finally, architecture is a collective art form and the studio environment needs to underscore this aspect. The studio is also a place for students to take responsibility for what they have created, and to present and defend their ideas in public. The studio has aspects of a common – a place where ideas are presented and debated, where contradictory viewpoints can coexist, and some sense of shared purpose evolves. Ideas, methods, and proposals may differ, but in different ways, everyone is working toward a similar goal.

MERIT

SAA/Stan Allen Architect

ARCHITECTURE / URBANISM / TEAM LEADERSHIP

Stan Allen Architect is a creative design studio internationally recognized for its innovative approach to the integration of architecture, landscape and urbanism. We believe in an “open source” model of design intelligence, where the expertise of many disciplines converges on questions of the contemporary city and new building programs. The collaborative structure of our practice encompasses program, site and landscape design, building technology, arts, media and organizational structure. Our work, like the contemporary city itself, anticipates growth and change over time. Our special expertise includes strategic planning at the urban scale, complex organizational thinking, as well as precisely detailed architectural proposals.

SAA/Stan Allen Architect brings extensive experience to bear on complex projects requiring collaborative teams working across multiple national boundaries. We are committed to developing an open-ended design methodology that includes input from clients, local authorities as well as the public at large. Our leadership and design excellence has been recognized with awards and competition prizes. We would be fully committed to the Gwanggyo Lakeside Park project, and feel that our design approach is well suited to the challenge.

Stan Allen is an architect working in New York and Dean of the School of Architecture at Princeton University. He holds degrees from Brown University, The Cooper Union and Princeton. After graduation he worked for Richard Meier in New York and Rafael Moneo in Madrid. In 1990 he established an independent practice, and since that time, has pursued parallel careers as educator, writer and architect. He has taught at Harvard, Columbia and Princeton, and his architectural firm SAA/Stan Allen Architect has realized buildings and urban projects in the United States, Latin America and Asia. Responding to the complexity of the modern city in creative ways, Stan Allen has developed an extensive catalogue of innovative design strategies, in particular looking at field theory, landscape architecture and ecology as models to revitalize the practices of urban design. In 2007, he received a Progressive Architecture Award for the Taichung Gateway Park and in 2008, a Faith and Form Award for the CCV Chapel and a Progressive Architecture Award for the Yan-Ping Waterfront in Taipei. In 2009, he has received the 2009 John Hejduk Award from the Cooper Union Alumni Association, a Progressive Architecture Award for the Taipei Waterfront, an AIA Merit Award for the CCV Chapel and an Architecture Award from the American Academy of Arts and Letters. His architectural work is published in *Points + Lines: Diagrams and Projects for the City*, and his essays in *Practice: Architecture, Technique and Representation*.

STAN ALLEN, principal-in-charge; CARLOS ARNAIZ, associate partner; design and production team: MARC MCQUADE, LEO HENKE, GIANCARLO VALLE, BENJAMIN CADENA, ROSALYNE SHIEH

CLIENT REFERENCE: Taipei City Mayor Lung-Bin Hau, 11F, 1 Shifu Road, Taipei, TW, 401 R.O.C. (886-2) 2725-8992

CONTACT INFO: www.stanallenarchitect.com; carnaiz@stanallenarchitect.com; m (617) 835 1926

Coen + Partners LANDSCAPE / BOTANY

Coen+Partners is an internationally renowned landscape architecture practice with studios in Minneapolis and New York City. Through a process of collaboration, experimentation and questioning, our progressive work embraces the complexities of each site with quiet clarity. The success of our practice is due to our design vision and dedication to our clients. Our landscapes are influenced by people and place. We collaborate extensively with top and emerging global design talent to create site designs integrating programmatic, architectural and ecological goals with innovation and beauty. Our interventions emphasize the materials, textures, and rhythms of our contemporary era and the regions where we work.

SHANE COEN, principal and owner; STEPHANIE GROTTA, principal; BRYAN KRAMER, senior associate; TRAVIS VAN LIERE, senior associate

ARUP TRANSPORTATION / ENGINEERING

ARUP is one of the world's largest independent engineering firms. Foremost among its beliefs are 'total design'—the integration of the design and construction processes and the interdependence of all the professions involved—the creative nature of engineering design, the value of innovation and the social purpose of design. Our New York office has been established for fifteen years and our 300+ staff are actively engaged in large infrastructure projects in the New York region, including the redevelopment of Hudson River Park, the East River Waterfront Master Plan, JFK International Airport, the Downtown Brooklyn Traffic Calming Study and the new, multi-million dollar, Second Avenue Subway. Our major overseas project we are currently working on is Songdo City In Korea.

TOM KENNEDY, associate principal, civil engineer; TOM JOST, associate principal, urban and master planning; TRENT LETHCO, associate principal, transportation planner; CLIFF MCMILLAN, project management;

SAA/RELEVANT PAST PROJECTS

TAIPEI WESTERN WATERFRONT, TAIPEI, TAIWAN
SAA is the design lead for a new waterfront park fronting Taipei's Central Station

TORONTO WATERFRONT, TORONTO, CANADA
Finalist in Invited International Competition for Waterfront Urban Design

TAICHUNG GATEWAY, TAICHUNG, TAIWAN
Architecture, landscape and urban design for the site of Taichung's former municipal airport. First Prize in International Competition; Progressive Architecture Award, 2008

WILLETS POINT URBAN DESIGN
Urban design proposal for the Queens Chamber of Commerce

ECO-RESORT, CARTAGENA, COLOMBIA
Planning for 150 houses and shared public amenities on 300 hectares beachfront site

CMC TAICHUNG, TAICHUNG CITY, TAIWAN
18,000-seat outdoor amphitheater and associated support functions

FRESH KILLS PARK, STATEN ISLAND, NEW YORK
Masterplanning, landscape and architectural design for 2,200 acre landfill site; First Prize in invited competition

BOTANICAL GARDEN, UNIVERSITY OF PUERTO RICO, SAN JUAN
Visitor's Center and Sculpture Gallery

WORLD TRADE CENTER INNOVATIVE IDEAS COMPETITION
Finalists in Invited International Competition, 2002

PARK DOWNSVIEW, TORONTO, ONTARIO, CANADA
Finalists in Invited International Competition, 2006

SAA/RECENT AWARDS

2009 JOHN HEJDUK AWARD, COOPER UNION ALUMNI ASSOCIATION
MERIT AWARD FOR CCV CHAPEL, AIA NEW YORK CITY CHAPTER
ACADEMY AWARD IN ARCHITECTURE, AMERICAN ACADEMY OF ARTS AND LETTERS

2008 FAITH AND FORM AWARD FOR CCV CHAPEL
PROGRESSIVE ARCHITECTURE AWARD FOR TAIPEI WATERFRONT

2007 PROGRESSIVE ARCHITECTURE AWARD FOR TAICHUNG GATEWAY

2002 PRESIDENT'S CITATION FOR EXCEPTIONAL CONTRIBUTIONS TO ARCHITECTURE

Omnivore IDENTITY / GRAPHICS

Omnivore is a New York-based design studio founded in 2002. A voracious appetite for art, architecture and culture-related design work is balanced by work for cause-related organizations such as the Robin Hood Foundation, and Human Rights Campaign.

Each Omnivore project is a unique collaboration combining a willingness to experiment with intuition and experience. Recent projects have been with the New Museum of Contemporary Art; Guggenheim Museum; Institute of Contemporary Art Boston; La Biennale di Venezia—Architecture Exhibition; Princeton University School of Architecture; Harvard University Graduate School of Design; Target; Chronicle Books; and The New York Times.

ALICE CHUNG, principal and co-founder;
ELEANOR CHUNG, project management

Atelier 10 SUSTAINABILITY / ECOLOGY

Atelier Ten is a firm of environmental designers who are committed to the application of low-energy and sustainable design principles. Our core objective is to meet the needs of our clients by developing well-integrated buildings with simple systems that work with natural laws of physics to increase comfort, reduce energy consumption and contribute back to the greater environment. Atelier Ten was founded in 1990 in London as a team of MEP engineers working in close collaboration with likeminded clients and architects. For projects both in the UK and around the world we have been able to develop awardwinning buildings that integrate architectural, environmental and structural requirements in one cost-effective envelope.

PATRICK BELLEW, founding principal; NICO KIENZL, director; PAUL STOLLER, director